



Changzhou Suma Precision Machinery Co.,Ltd

Address: Liudao Industrial Park, Yaoguan Town, Wujin, Changzhou, Jiangsu , China 213102

Contact person: Ellen Zhang

Email: ellen@chinasuma.com

Skype: suma.com5

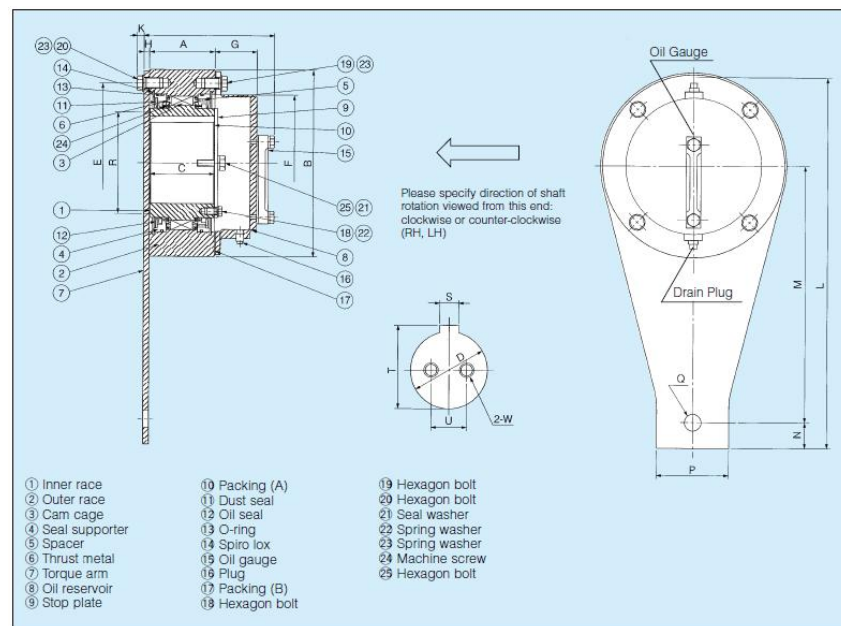
Tel: 0086 18068536660

Technical Parameter

BS-R SERIES CAM CLUTCH



MODELS BS65R TO BS135R Oil Reservoir Type

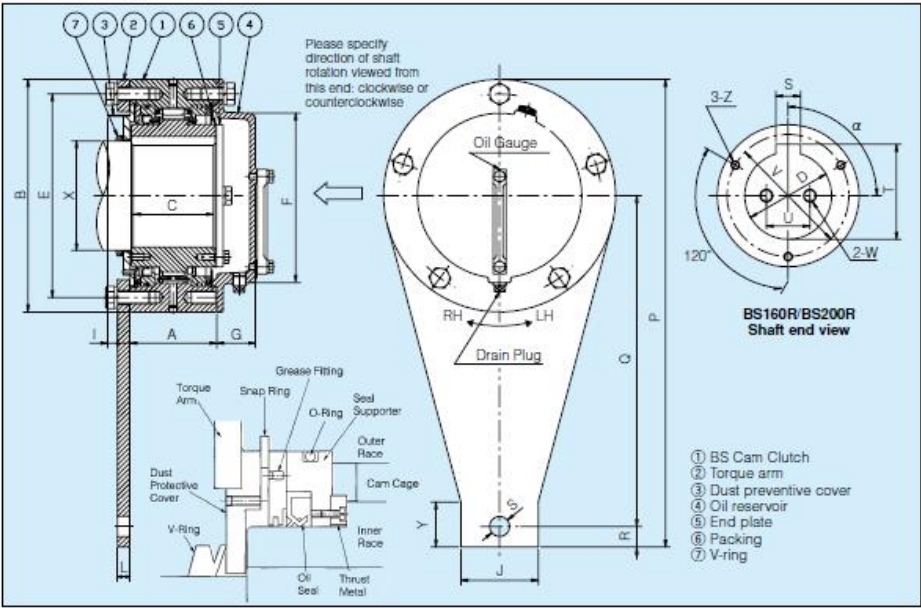


Dimensions and Capacities(Dimensions in mm)

Model	Torque Capacity (N·m)	Bore Diameter Range	Max. Overrunning (r/m) Inner Race	A	B	C	PCD E	F	G	H	K	L	M	N	P	Q	R
BS65R	1,570	40to65	200	90	160	85	140	115	50	6	9.5	306	210	16	50	13.5	90
BS75R	2,450	50 to75	180	90	170	85	150	125	50	6	9.5	354	250	19	65	16.5	100
BS85R	5,880	60 to85	180	115	210	110	185	140	60	9	11	434	300	29	95	20.5	115
BS95R	7,840	70 to95	170	115	230	110	200	160	60	9	12.5	497	350	32	105	20.5	130
BS110R	10,800	80 to 110	170	115	270	110	220	180	60	12	14	560	385	40	110	26	140
BS135R	15,700	90 to 135	120	135	320	130	280	230	60	12	14	666	470	36	120	26	180

■ MODELS BS220R TO BS450R

Oil Reservoir Type

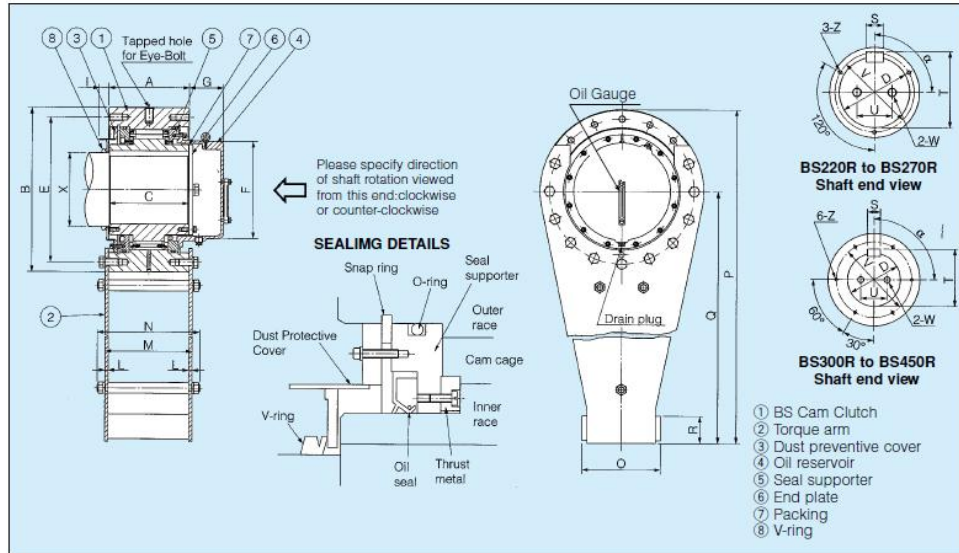


Dimensions and Capacities(Dimensions in mm)

Model	Torque Capacity (N·m)	Bore Diameter Range	Max. Overrunning (r/m) Inner Race	A	B	C	PCD E	F	G	L	I	J	R	P	Q	S	V	Y	Z	Oil (mℓ)	W.Min	W.Max
BS160R	24500	100 to 160	100	135	360	130	315	255	60	19	16	120	32	792	580	31	190	65	M10	1300	108	95
BS200R	37200	100 to 200	100	150	430	145	380	310	60	19	21	130	43	838	623	41	235	70	M12	1900	182	155

MODELS BS220R TO BS450R

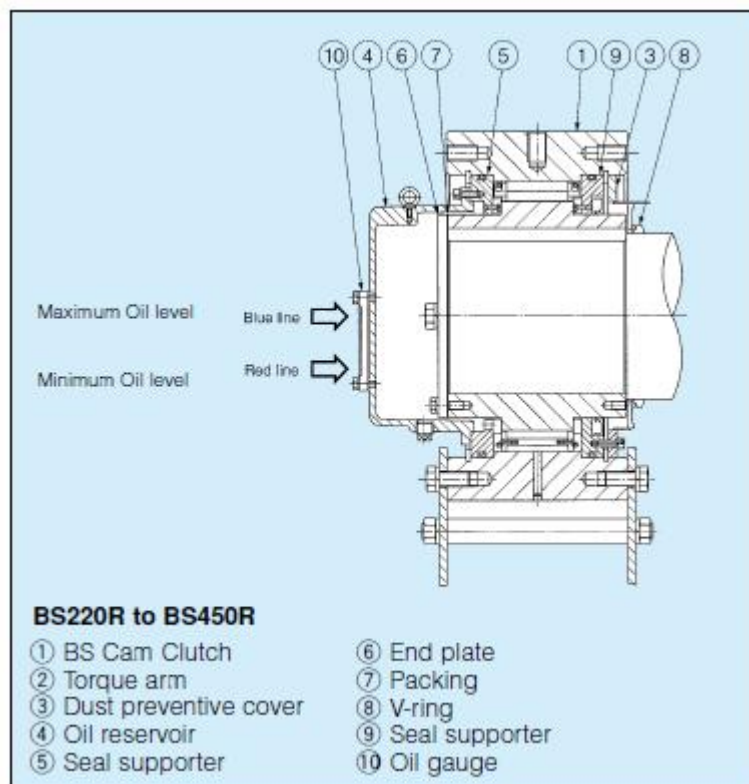
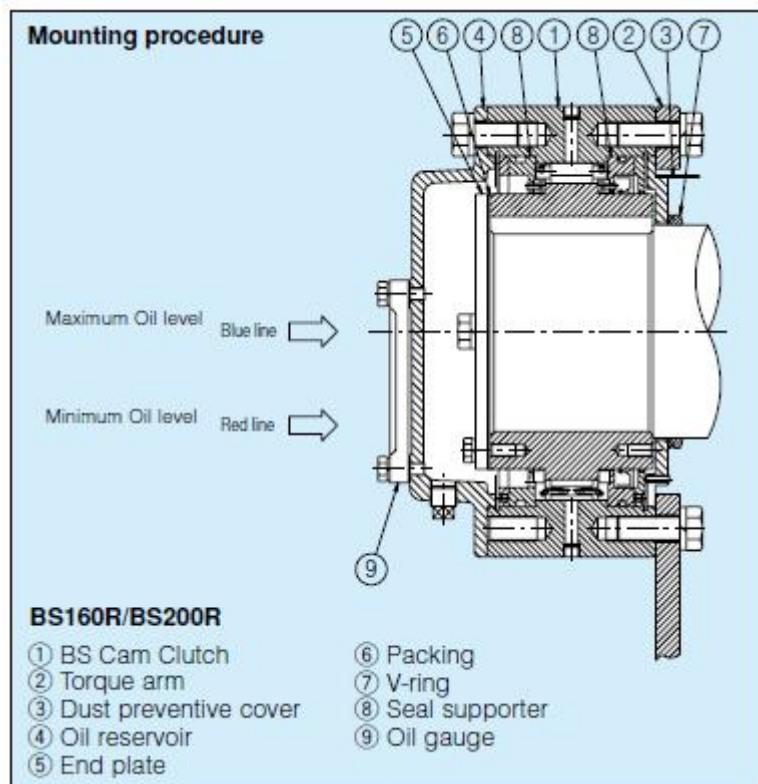
Oil Reservoir Type



Dimensions and Capacities(Dimensions in mm)

Model	Torque Capacity (N·m)	Bore Diameter Range	Max. (r/m) Overrunning Inner Race	A	B	C	PCD E	F	G	I	L	M	N	O	P	Q	R	V	Z	W.Min	W.Max
BS 220R	49000	150 to 220	80	235	500	230	420	296	95	35	12	259	311	238	1070	820	80	255	M12	347	310
BS 250R	88200	175 to 250	50	295	600	290	530	355	125	35	12	319	375	288	1300	1000	100	290	M14	637	580
BS 270R	123000	200 to 270	50	295	650	290	575	395	130	40	12	319	375	298	1425	1100	110	320	M14	660	602
BS 300R	176000	230 to 300	50	295	780	290	690	495	130	45	19	333	396	356	1690	1300	135	385	M14	1050	983
BS 335R	265000	250 to 335	50	305	850	320	750	525	135	60	19	343	405	386	1925	1500	135	415	M16	1210	1120
BS 350R	314000	250 to 350	50	320	930	360	815	565	135	71	19	358	430	414	2065	1600	135	442	M16	1710	1580
BS 425R	510000	325 to 425	50	440	1030	450	940	680	170	70	22	484	570	474	2315	1800	165	5360	M20	1580	2370
BS 450R	686000	350 to 450	50	450	1090	480	990	690	180	80	22	494	580	526	2545	2000	165	550	M20	2930	2690

MOUNTING EXAMPLE



■ BS-R INSTALLATION PROCEDURES

Pre-Installation

1. The oil reservoir and the end plate are fixed to the BS Cam Clutch temporarily when packed to prevent dust from entering during transportation. Carefully remove them from the clutch and prevent the dust from penetrating into the clutch.
2. For models from BS160R to BS450R, Apply the grease between the space where the dust cover fits and the seal supporter. (The grease prevents the dust from entering.)
3. Attach the dust cover to the Cam Clutch.
4. Check whether the rotational direction of the conveyor shaft corresponds to that of the BS Cam Clutch viewed from the oil reservoir (the overrunning direction is shown as an arrow on the end face of the inner race)
5. Securely install the torque arm to the BS Cam Clutch using bolts with a strength class of 10.9 grade or higher. Make sure the surface of the torque arm which contacts the end face of the outer race is flat and free of dust, to ensure enough frictional force is achieved.

Installation

1. Pre-insert the V-ring into the conveyor shaft in the correct direction.
2. Securely install the BS Cam Clutch onto the shaft. Apply the pressure only on the end face of the inner race when inserting the BS Cam Clutch onto the shaft. Do not hit the inner race directly with a hammer or apply pressure on the outer race.
3. Apply the sealant supplied, to the end face of the inner race and packing, and fix the BS Cam Clutch unit to the conveyor shaft with the end plate. At the same time, use the seal washer on each bolt to prevent oil leakage.
4. After cleaning the inside of the oil reservoir, apply the sealant on the mating face of the oil reservoir. Place the oil level gauge vertically (red line is bottom, and blue is top), for models from BS65R to BS200R; install the oil reservoir to the end face of the outer race with the bolts, while for models BS220R and above, install the oil reservoir to the seal supporter using the bolts. Carefully prevent dust from penetrating the Cam Clutch or oil reservoir.
5. Press the pre-inserted V-ring entirely so that the face of the dust cover contacts closely.
6. In case the ambient temperature rises 40°C and above, it is recommended to set shield or roof and avoid direct sunlight in order to extend the life span of Cam Clutch